

**DOCUMENT 00 90 00
ADDENDUM**

ADDENDUM NO. [1] Date: February 25, 2021

**RE: ARCADIA SCHOOL DISTRICT
DAYCARE FACILITY REMODEL
350 EAST RIVER ST
ARCADIA, WI 54612
HSR PROJECT NO. 20016**

**FROM: HSR Associates, Inc
100 Milwaukee Street
La Crosse, WI 54603
(608) 784-1830**

To: Prospective Bidders

This addendum forms a part of the Contract Documents and modifies the original Bidding Documents dated February 2021. Acknowledge receipt of this Addendum in the space provided on the bid form. Failure to do so may subject the Bidder to disqualification.

This Addendum consists of [1] page and [2] 30 x 42 drawings.

CHANGES TO DRAWINGS

1. Sheet E100 LIGHTING PLANS 30 x 42 attached hereto
 - a. Revisions clouded on Drawing.
 - b. Add Light Fixture Schedule.
 - c. Deleted daylighting area in lobby 117.
 - d. Changed fixture types in Office and Toilets.

2. Sheet E200 POWER PLAN 30 x 42 attached hereto
 - a. Revisions clouded on Drawing.
 - b. Add Panelboard Schedule.
 - c. Add Motor Schedule.

END OF DOCUMENT 00 90 00

Page Intentionally Left Blank



Consultant:

SCHOOL DISTRICT OF ARCADIA
ELEMENTARY SCHOOL REMODEL
PROJECT LOCATION: 358 EAST RIVER STREET
ARCADIA, WISCONSIN
SHEET TITLE: LIGHTING PLAN

Project Title:
Project Number:
Project Date:
Drawn By:
Key Plan:

2016
FEBRUARY 2021
C. CRANDALL

Revisions:

No.	Description	Date
AD-1	Addendum no. 1	2/25/21

Graphic Scale:
VARIES
Last Update:
2/23/2021 2:26:51 PM

E100

LIGHT FIXTURE SCHEDULE												
TYPE	MANUFACTURER	CATALOG NUMBER	DESCRIPTION	VOLT	MOUNTING **					WATTS	COLOR TEMP.	REMARKS
					F	S	P	O				
A1	DAYBRITE	2FZP45L840-2-DS-UNV-DIM	2'X2' LED FLAT PANEL 4500 LU	UNIV.	.					36	4000K	1
A1S	DAYBRITE	2FZ45L840-2-DS-UNV-DIM/FSKZ2	LED FLAT PANEL 4500 LU/SURFACE	UNIV.	.	.				36	4000K	1.3
A2	DAYBRITE	2FZP45L840-2-DS-UNV-DIM-BSL1-LST.	2'X2' LED FLAT PANEL 4500 LU	UNIV.	.					36	4000K	1.2
X1	CHLORIDE	CLXNRW	EXIT LIGHT WITH BATTERY	UNIV.	.					4	N/A	4

* SEE REMARKS
** (F) FLUSH MOUNT; (S) SURFACE MOUNT; (P) PENDANT HUNG; (O) OTHER-SEE REMARKS IN REGARDS TO FIXTURE MOUNTING.

REMARKS

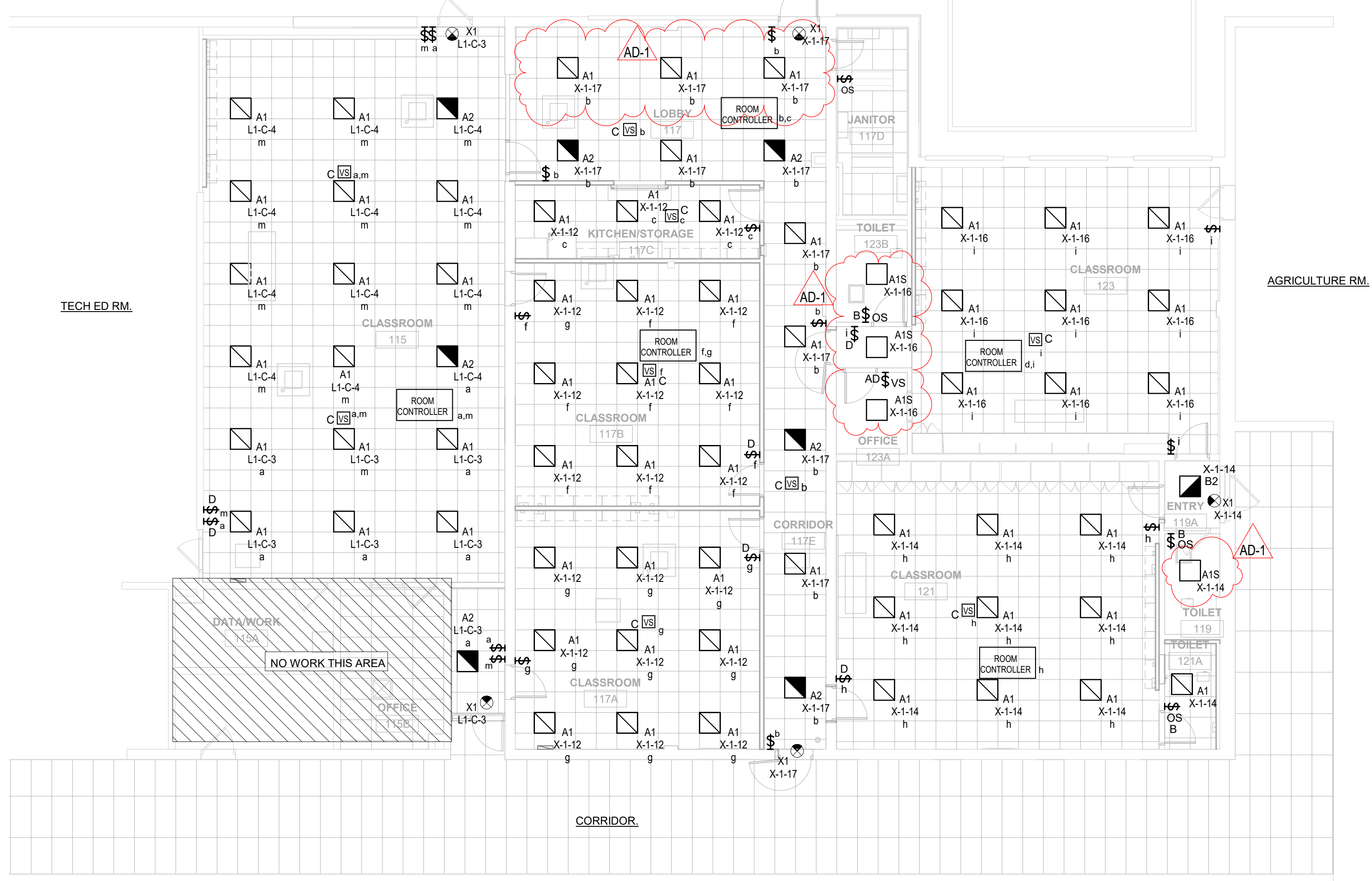
- 2'X 2' LED FLAT PANEL.
- PROVIDE WITH EMERGENCY LIGHTING BATTERY.
- PROVIDE WITH SURFACE MOUNTING KIT.
- LED EXIT LIGHT, BATTERY, RED LETTERS WITH WHITE HOUSING.

EQUAL FIXTURES:

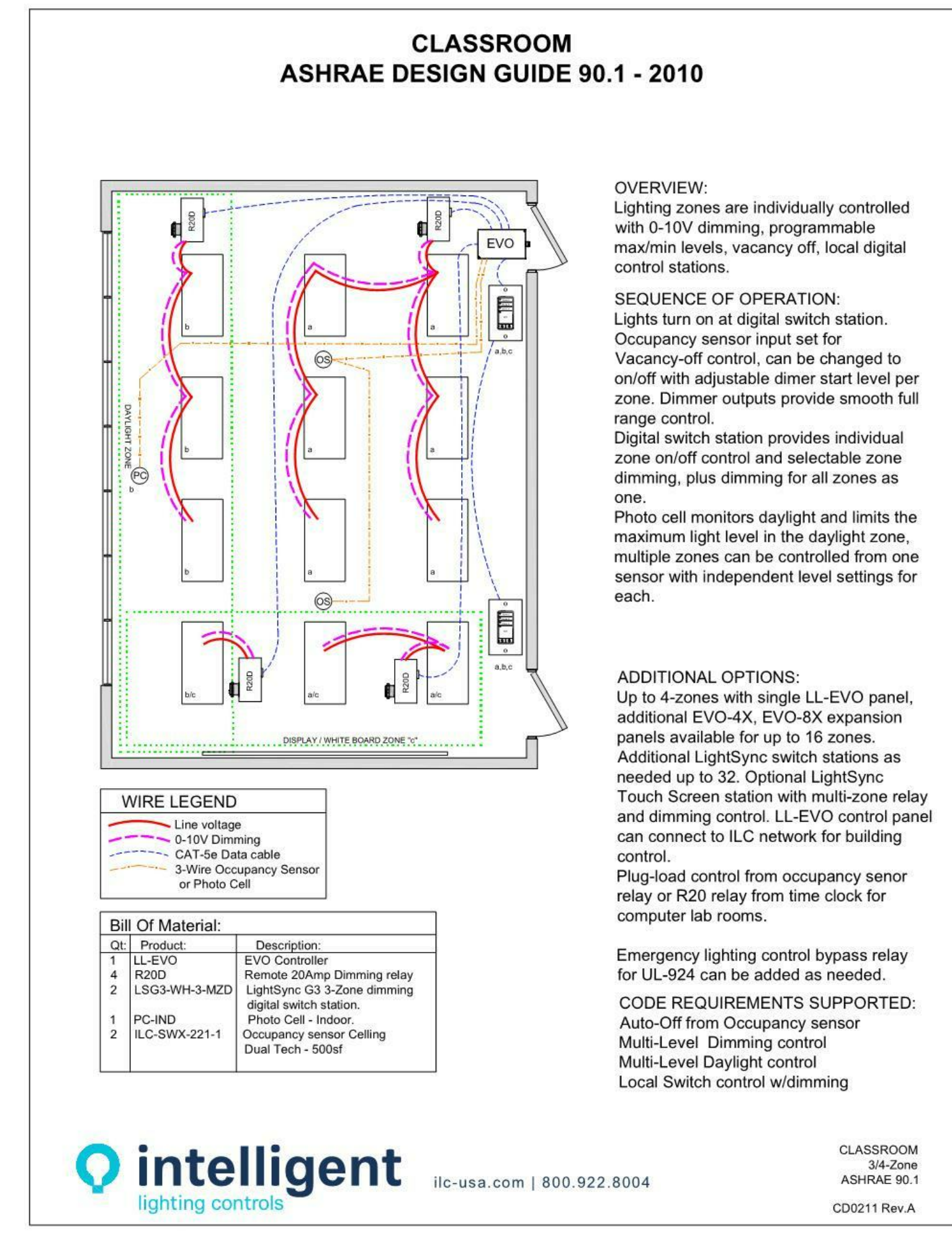
- FIXTURES EQUAL IN ALL RESPECTS TO THE SPECIFIED FIXTURES MANUFACTURED BY, PHILIPS, COOPER LIGHTING, LITHONIA, COLUMBIA, HUBBELL, & DAYBRITE SHALL BE CONSIDERED AS EQUAL.

- GENERAL NOTES :
- PROVIDE GROUND CONDUCTOR IN ALL RACEWAYS.
 - PROVIDE FIRE STOPPING AND SMOKE DRAFT STOPPING AT ALL CONDUIT PENETRATIONS. REFER TO SPECIFICATION SECTION 07 84 00 FOR FIRE RESISTIVE AND NON-FIRE RESISTIVE ASSEMBLIES.
 - THE WORD "PROVIDE" MEANS TO FURNISH AND INSTALL.
 - CIRCUIT NUMBERS INDICATED ON DRAWINGS ARE FOR REFERENCE. ELECTRICAL CONTRACTOR TO ARRANGE BRANCH CIRCUITS AS REQUIRED FOR WIRING AND LOAD BALANCING. INDICATE ACTUAL PANELBOARD CIRCUIT NUMBERS ON AS-BUILT DRAWINGS.
 - SEE ARCHITECTURAL SHEETS FOR RELEVANT INTERIOR ELEVATIONS, SECTIONS AND MISCELLANEOUS BUILDING INFORMATION REQUIRED TO COMPLETE THE ELECTRICAL INSTALLATION.
 - CONNECT BATTERY EXIT SIGNS AND EGRESS LIGHTING TO ADJACENT EMERGENCY LIGHTING CIRCUIT AHEAD OF ALL SWITCHING.
 - PROVIDE AUXILIARY RELAY FOR ALL OCCUPANCY SENSOR FOR VENTILATION/EXHAUST FANS. REFER TO MECHANICAL.

KEY NOTES : (4)



1 FLOOR LIGHTING PLAN
1/8" = 1'-0"



2 ROOM CONTROLLER WIRING
NTS

Revisions:		
No.	Description	Date
AD-1	Addendum no. 1	2/25/21

Graphic Scale:
VARIES

Last Update:
2/23/2021 2:28:10 PM

PANELBOARD SCHEDULE															
PANEL NAME	ROOM NO.	MFGR. TYPE	MOUNT'G				MAINS				BRANCHES				REMARK NUMBER
			FLUSH SURFACE	WIDTH	DEPTH	ELECTRICAL SERVICE	AMP	LUGS	BREAKER SWITCH	FEED THRU NO. LUGS	AMP. POLE	CIRCUIT NUMBERS	SPACE		
X-1 (EXISTING)	CLASSROOM 117A	GE	X			208Y120 VOLT 3 PH, 4 WIRE	200	X			8	20	1	X-1-1,2-8 (EXISTING BREAKERS)	1
L1-C (EXISTING)	CLASSROOM 115	SQ D	X			208Y120 VOLT 3 PH, 4 WIRE	200	X			11	20	1	L1-C-1,2-7,9,11-13 (NEW BREAKERS)	2
											1	25	2	L1-C-15,17 (NEW BREAKERS)	
											1	50	2	L1-C-8,10 (NEW BREAKERS)	

* SEE REMARKS

PANELBOARD SCHEDULE REMARKS:

- RESUE EXISTING CIRCUIT BREAKERS. PROVIDE NEW BRANCH CIRCUIT WIRING.
- PROVIDE NEW CIRCUIT BREAKERS IN EXISTING PANEL, MATCH EXISTING TYPE.

MOTOR SCHEDULE																	
MOTOR NUMBER	DESCRIPTION	HVAC/PLBG. EQUIP. NO.	LOCATION ROOM NO.	MOTOR RATING			DISCONNECT BY			STARTER BY			CONTROL WIRING BY		WIRING SIZE COND.	GRD.	REMARKS
				HP	VOLT	PH	MEC	ELEC.	TYPE	MEC	ELEC.	TYPE	MEC	ELEC.			
CU-1	CONDENSING UNIT	CU-1	LOBBY 117	11 MCA	208	1	X		NF	X		X		2 #10	#10		
ACU-7	PACKAGED TERMINAL A/C UNIT	ACU-7	LOBBY 117	1.0 MCA	208	1	X		NF	X		X		2 #10	#10		
EF-1	EXHAUST FAN	EF-1	TOILET 121A	10 WATT	120	1	X		NF	X		X		2 #12	#12	1	
EF-2	EXHAUST FAN	EF-2	TOILET 123B	10 WATT	120	1	X		NF	X		X		2 #12	#12	1	

SEE REMARKS

*** (CB) CIRCUIT BREAKER, (CS) COMBINATION STARTER/DISCONNECT, (F) FUSED SAFETY SWITCH, (NF) NOT FUSED SAFETY SWITCH, (TG) TOGGLE SWITCH/(VNR) FULL VOLTAGE NON-REVERSING MAGNETIC STARTER, (FVR) FULL VOLTAGE REVERSING MAGNETIC STARTER, (MS) MANUAL STARTER-WITH OVERLOAD PROTECTION, (MSW) MANUAL SWITCH-WITHOUT OVERLOAD PROTECTION, (MCC) MOTOR CONTROL CENTER, (PB) PUSH BUTTON STARTER, (VFD) VARIABLE FREQUENCY DRIVE

REMARKS

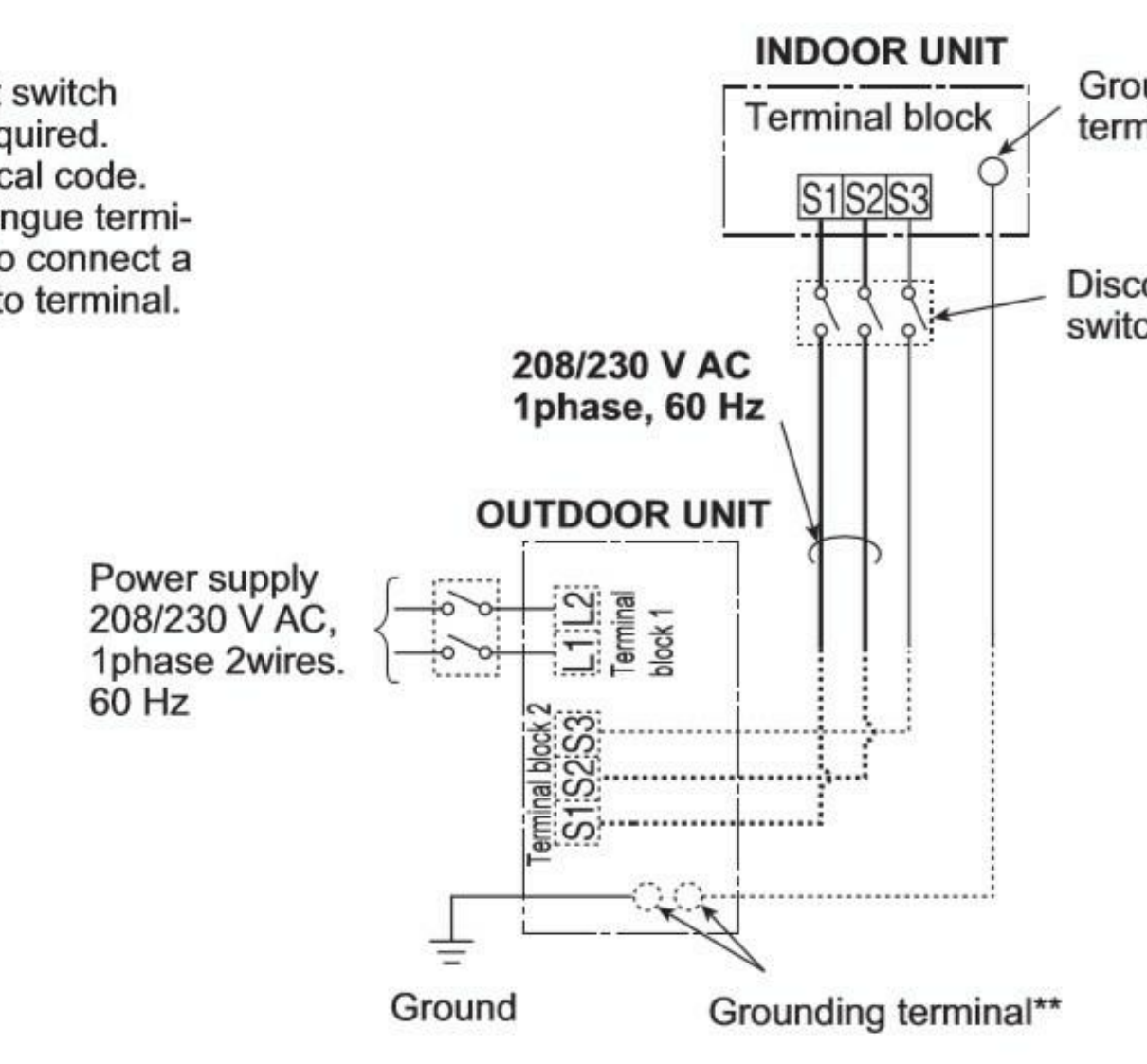
- CONNECT EXHAUST FAN TO BE CONTROLLED WITH ROOM LIGHTING.

- GENERAL NOTES :
- PROVIDE GROUND CONDUCTOR IN ALL RACEWAYS.
 - PROVIDE SEPARATE NEUTRAL CONDUCTORS FOR EACH BRANCH CIRCUIT.
 - THE WORD "PROVIDE" MEANS TO FURNISH AND INSTALL.
 - SEE MOTOR, EQUIPMENT, HEAT PUMP SCHEDULES, FOR ALL PANEL DESIGNATIONS, AND CIRCUIT NUMBERS, AND BREAKER SIZES.
 - CIRCUIT NUMBERS INDICATED ON DRAWINGS ARE FOR REFERENCE. ELECTRICAL CONTRACTOR TO ARRANGE BRANCH CIRCUITS AS REQUIRED FOR WIRING AND LOAD BALANCING. INDICATE ACTUAL PANELBOARD CIRCUIT NUMBERS ON AS-BUILT DRAWINGS.
 - SEE ARCHITECTURAL SHEETS FOR RELEVANT INTERIOR ELEVATIONS, SECTIONS AND MISCELLANEOUS BUILDING INFORMATION REQUIRED TO COMPLETE THE ELECTRICAL INSTALLATION.
 - COORDINATE ALL HVAC WITH MECHANICAL CONTRACTOR REFERENCE HVAC DRAWINGS.
 - ALL 20 AMP, 125 AND 250 VOLT NONLOCKING TYPE RECEPTACLE SHALL BE LISTED TAMPER-RESISTANT RECEPTACLE.
 - OWNER TO PROVIDE AND INSTALL ALL DATA CABLES. ELECTRICAL CONTRACTOR TO PROVIDE ROUGH-IN BOXES AND RACEWAYS.
 - ALL RECEPTACLES IN WORK AREA TO BE REPLACED WITH / NEW TAMPER RESISTANT RECEPTACLES.
 - OWNER TO PROVIDE BATTERY CLOCKS.
 - ALL NEW FIRE ALARM DEVICES TO EXISTING FIRE ALARM SYSTEM. PROVIDE SYSTEM WITH VOICE NOTIFICATION.
 - THE NEW PA SYSTEM TO EXISTING PA SYSTEM. PROVIDE INTERCONNECTING WIRING FROM EXISTING PAGING SYSTEM. PROVIDE ALL EQUIPMENT AND UPGRADES REQUIRED.

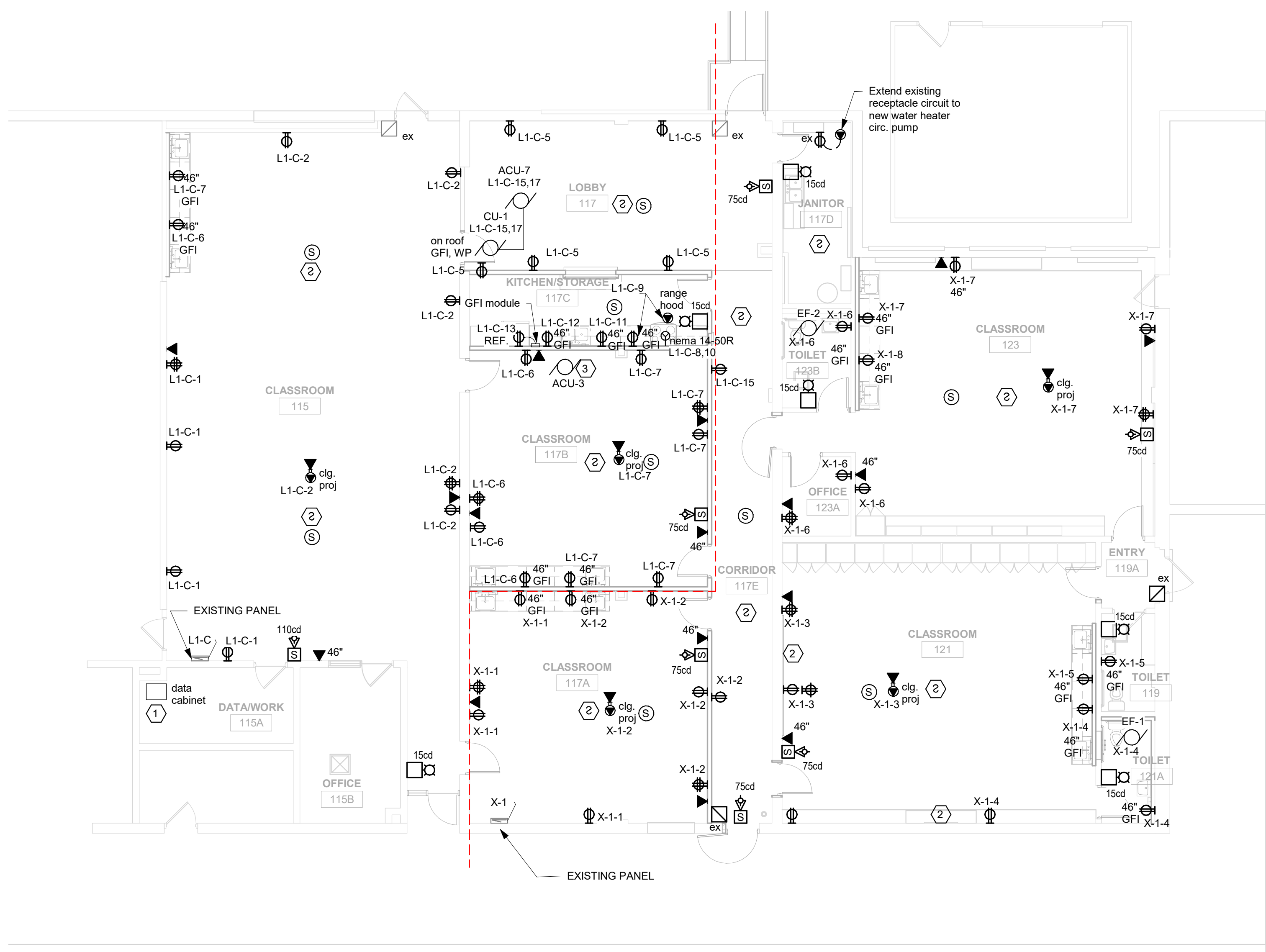
- POWER KEY NOTES :
- EXISTING DATA CABINET.
 - EXISTING SURFACE EMT CONDUIT IS ALLOWED ON THIS WALL.
 - EXISTING ACU-3 UNIT IS RELOCATED. EXTEND EXISTING BRANCH CIRCUIT WIRING.

Remark:

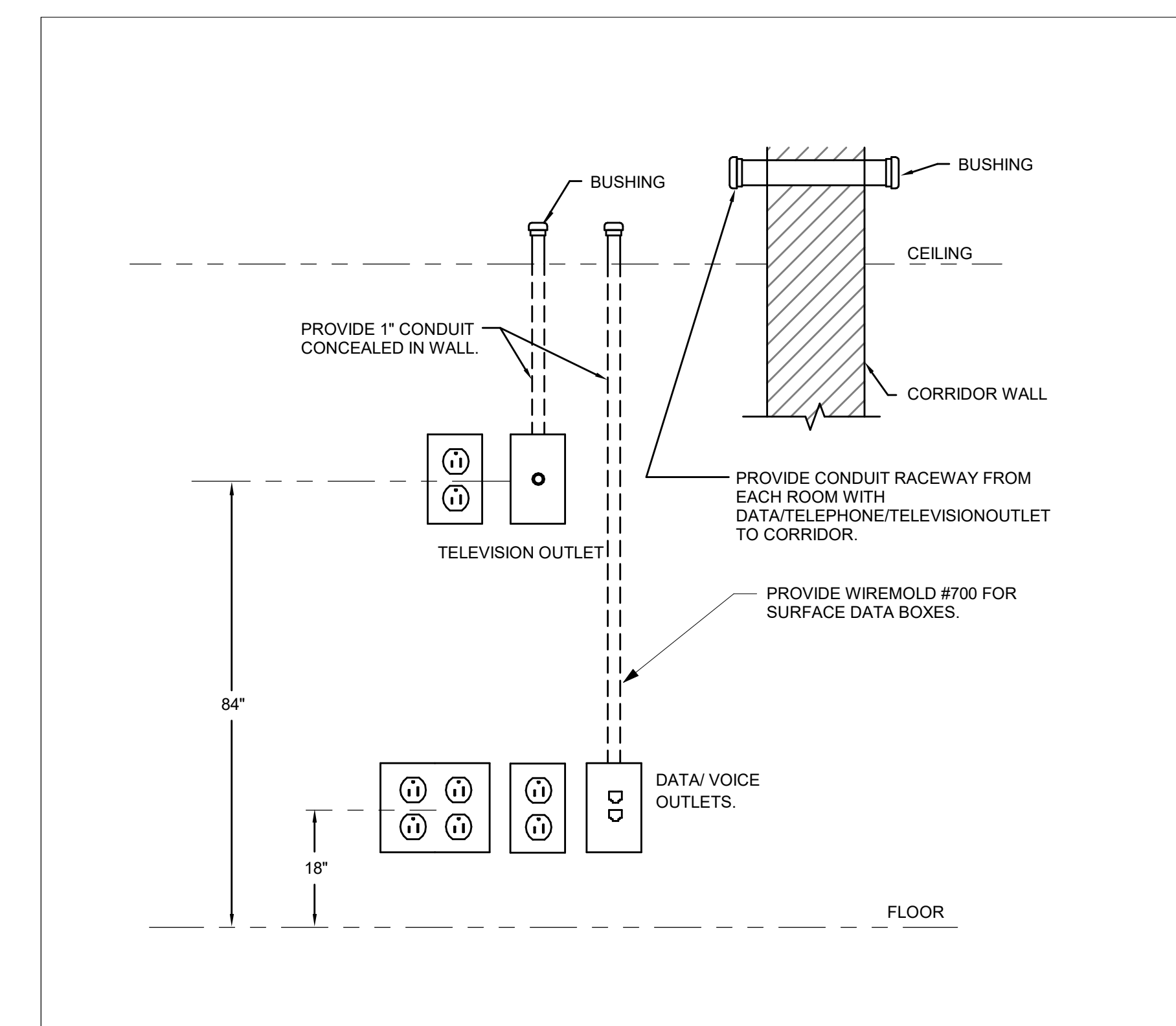
- A disconnect switch should be required. Check the local code.
- Use a ring tongue terminal in order to connect a ground wire to terminal.



3 MINI-SPLIT WIRING DIAGRAM
NTS



1 FLOOR POWER PLAN
1/8" = 1'-0"



2 RACEWAY DETAIL
NTS